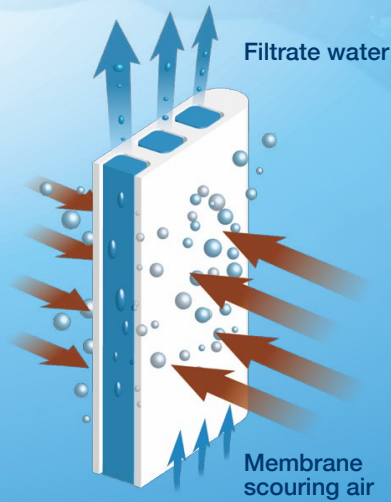


Ceramic Flat Sheet Membrane



Ceramic Flat Sheet Membrane

Produces high quality effluent and contributes to the effective reuse of water resources.



Advantage

Stable filtration performance and high effluent quality.

High durability

- Effective for long use in various type of water treatment due to high resistant to chemicals and heat.

Maintenance saving

- Daily maintenance routines can be reduced through the use of backwash and automated on-line chemical cleaning.
- Membranes ship dry and store dry.

High recoverability

- Deposited contaminants are easily removed due to the smooth and hydrophilic membrane surface.
- Membrane performance can be maintained for a long time by using physical and chemical cleanings.

Multi purpose

- Applied to various industrial wastewaters.
- Applied to liquid and solid separation of abrasive solids and concentrates.

Certification

Acquired major certifications due to reliable performance and high quality control.

JWRC Certification of Water Treatment Equipment

AMST Certification of Modules for Drinking Water Use

CA DDW Title 22

NSF61

NSF419

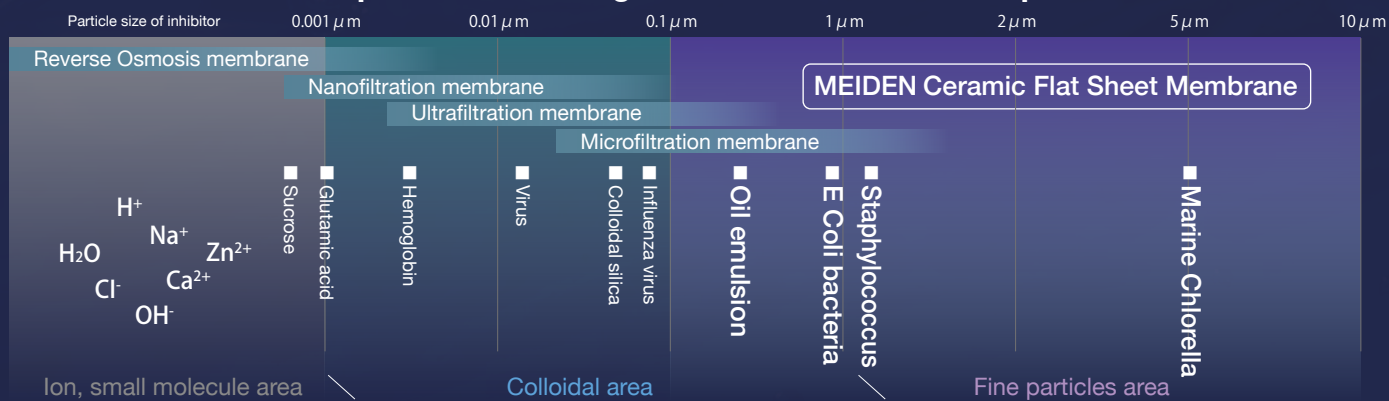
Application field

Certified membrane indicating the high quality of the ceramic membrane. Capable for various types of water treatment applications.

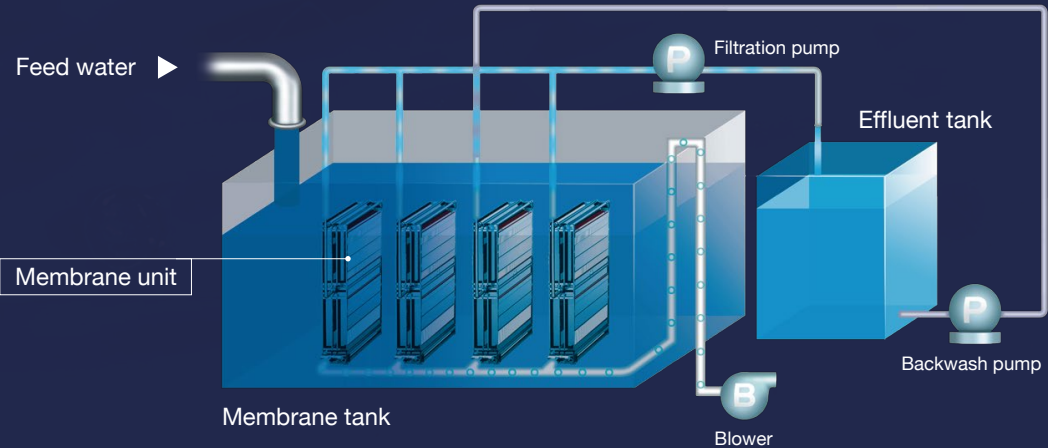


Particle filtration chart

Ceramic membrane capable of removing E.Coli bacteria and fine particles

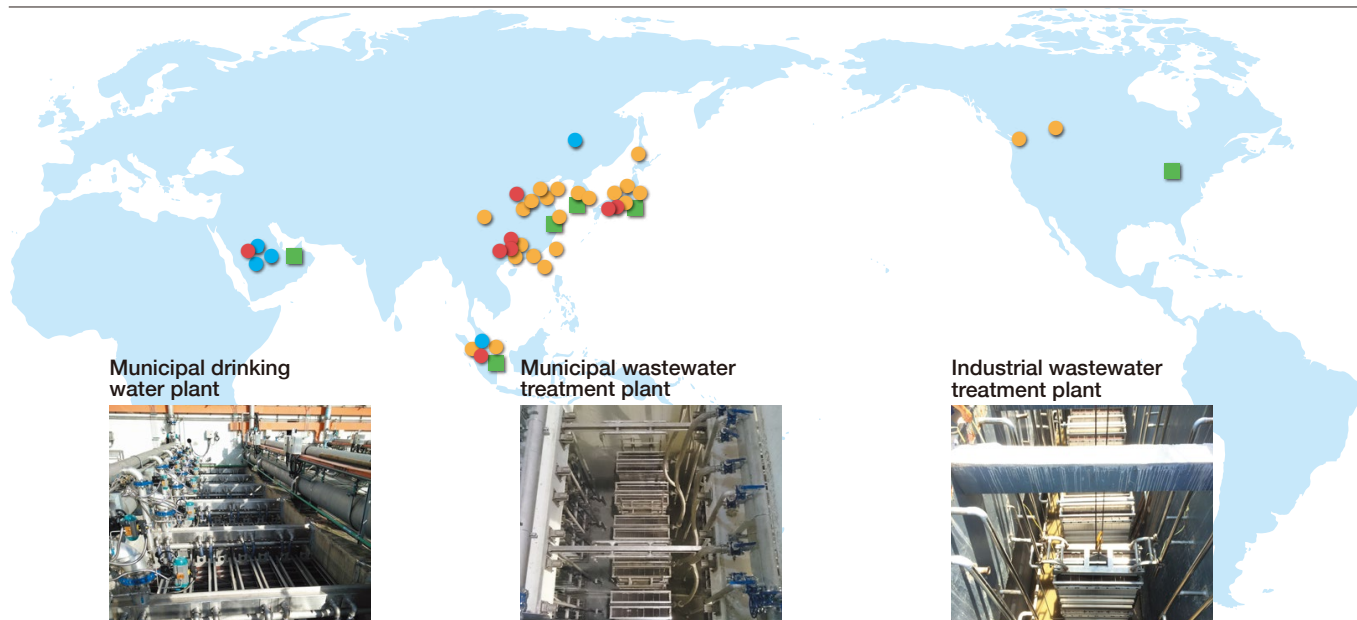


Filtration flow



Main Installations in countries around the world

● Drinking water
 ● Industrial wastewater
 ● Municipal wastewater
 ■ Sales base



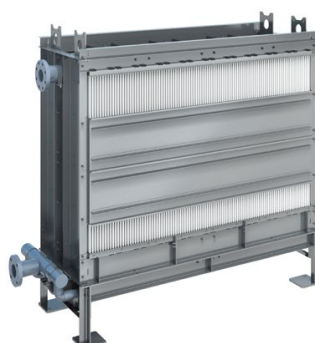
Product specifications

Ceramic membrane element



Model	CH250-1000E03K-5NA
Membrane type	Flat-sheet
Filtration	Out-In filtration
Material	Ceramic part: Alumina
Pore size	0.1μm
Dimensions	W280×H1046×T12 mm
Weight(dry)	1.8kg
Membrane area	0.5m ²
Pure water permeability	40m ³ /(m ² ·d) (100kPa, 25°C)

Ceramic membrane unit



Model	CH250-1000TM100-U1DJ
Number of ceramic membrane element	200pieces
Membrane surface area	100m ²
Dimensions	W2060×H1765×D680 mm
Weight(dry)	610kg



Model	CH250-1000TM100-U2DJ
Number of ceramic membrane element	400pieces (Double stack)
Membrane surface area	200m ²
Dimensions	W2200×H3095×D680 mm
Weight(dry)	1130kg

Please contact our department about terms of use



MEIDENSHA CORPORATION

www.meidensha.com

MEIDEN SINGAPORE PTE. LTD.

5, Jalan Pesawat, Jurong Industrial Estate, Singapore 619363
Phone: +65-6477-8629 Fax: +65-6264-4292
<http://www.meidensha.com/ms/>

MEIDEN AMERICA, INC.

15800 Centennial Drive, Northville Township, MI 48168, U.S.A.
Phone: +1-734-656-1400, Fax: +1-734-459-1863
<http://www.meidensha.com/mai/>

MEIDENSHA (SHANGHAI) CORPORATE MANAGEMENT CO., LTD.

17A Global Harbor Office Tower B, No. 1188 Kai Xuan
North Road, Putuo District, Shanghai 200063, P.R.China
Phone: +86-21-5306-2200 Fax: +86-21-6386-0058
<http://www.meidensha.com.cn/china/>

MEIDENSHA CORPORATION

ThinkPark Tower, 2-1-1 Osaki, Shinagawa-ku, Tokyo, 141-6029 Japan
Phone: +81-3-6420-7480, Fax: +81-3-5745-3050
<http://www.meidensha.com/>

Specifications in this catalog are subject to change without notice.

The seller shall not be liable for incidental damages, consequential damages including loss of profit and special damages.



BB60-3163G

As of Mar., 2022

2022-3ME (2.37V) 1L